

WEEK AT A GLANCE

Sunday, January 25

- 9:15 AM Sunday School
- 10:30 AM Worship Service—Pastor Laura
- 4:00 PM Casa Betania service

Wednesday, January 28—Homeless Shelter week starts

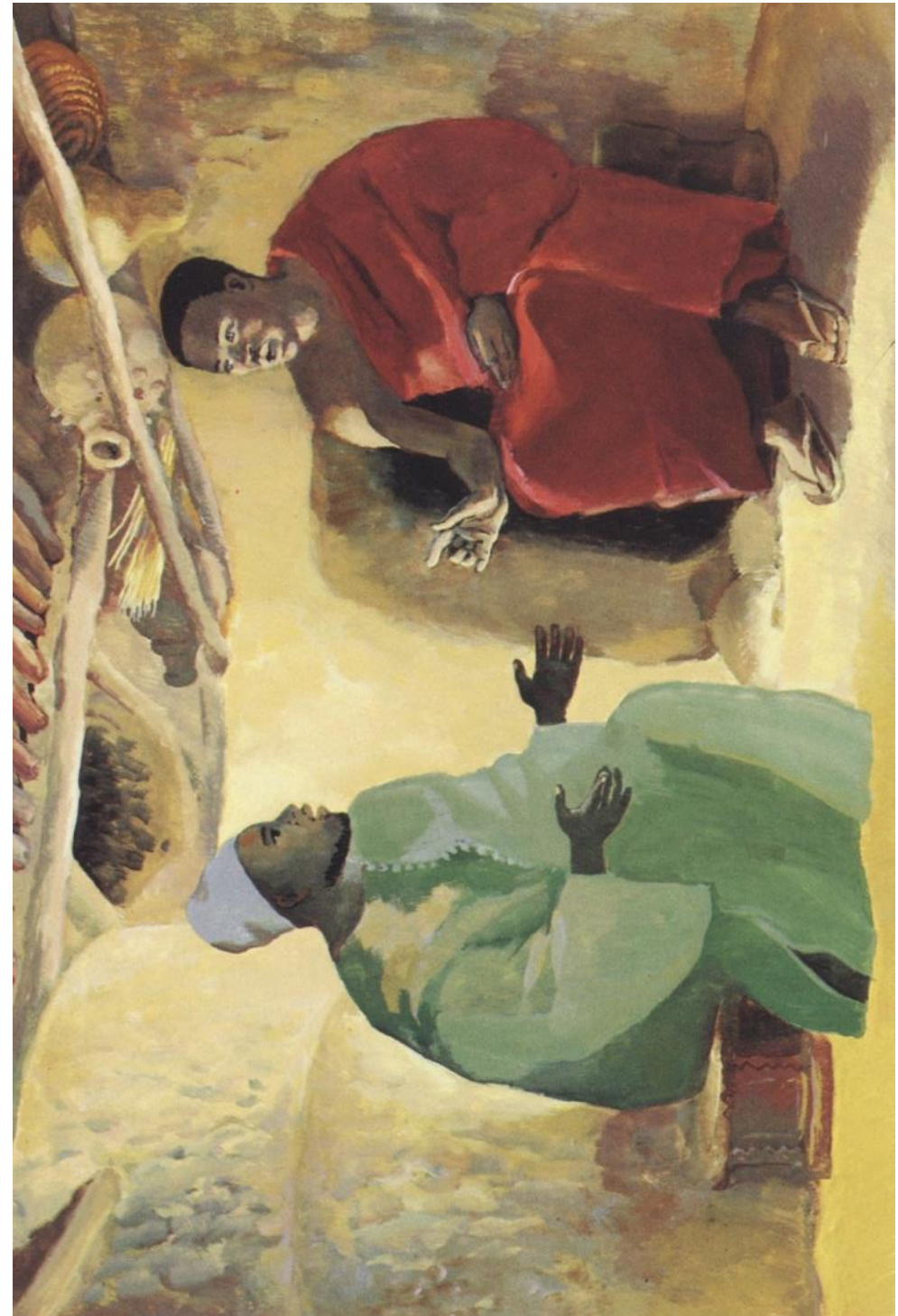
- 10:00 AM Staff Meeting
- 7:00 PM Men's Bible Study
- 7:00 PM Youth Group

Sunday, February 1

- 9:15 AM Sunday School
- 10:30 AM Worship Service—Pastor Luke
- 4:00 PM Casa Betania service

Upcoming worship service:

- Sunday, February 8—Pastor Laura



FIRST MENNONITE CHURCH

PO Box 291, 429 E. First Street, Newton, KS 67114-0291

Phone: 316-283-0273

E-mail: office@firstmennonitenewton.org

Website: www.firstmennonitenewton.org

Pastoral Team

Laura Goerzen, Pastor—620-386-0518; laurag@firstmennonitenewton.org

Luke Unruh, Pastor—620-386-4596; lukeu@firstmennonitenewton.org

*Pastor Laura and Pastor Luke are in the church office Monday-Thursday.

Administrative Assistant

Tracy Kerr—316-283-0273; office@firstmennonitenewton.org



Come and See

January 25, 2026

.....

Gathering

Welcome

Dave Wiebe, worship leader

Meditation Music

Lamb of God Most Holy
Choir

Call to Worship

Dave Wiebe, worship leader

Songs for worship

Jesus Messiah
Here I Am to Worship

Listening

Children's Time

Sara Rickard

**Children ages 2-5 may leave for supervised play time in Room #234.*

Prayer for Offering—Local Mission

Dave Wiebe

Scripture Reading

John 3:1-17
Dave Wiebe

Choir

Great is Thy Faithfulness

Sermon

Coming with Curiosity
Pastor Laura Goerzen

Response Song

How He Loves Us

Prayer of the Church

Pastor Luke Unruh

Sending

Sending Song

Build Your Kingdom Here

Announcements and Benediction

Dave Wiebe, worship leader

Postlude

Peace I Leave with You

.....

We will be live-streaming our worship beginning at 10:30 AM. You may view it on our webpage (firstmennonitenewton.org), on our Facebook page, YouTube, or at our Vimeo site. Recordings of the service will be available afterwards as well. Today Ryan Koehn, Isaac Koehn, and Melody Enns are operating the necessary systems for our worship. Musicians: Greg Bontrager, Choir director; Jyl Ewy and Joan Entz. Visuals: Cindy Unruh and Carol Goering. Property Committee: Rod Wedel

Happy Birthday!



Want to learn more about First Mennonite?

Scan the QR code or fill out the purple or green card in your pew and a pastor will reach out to you!



Have you ever wished you could listen to your favorite worship songs performed by our outstanding FMC bands anytime you want. Now you can by downloading your favorite songs and performances from the new FMC Playlist. This QR code will take you to a site that has 46 songs that you can download and listen to anytime. You can download one or all of the songs. Check back periodically as new songs will be added from time to time.



OUR VISION—Together in Christ: rooted deeply, reaching widely, loving well

OUR MISSION—With Jesus as our center, we are called to be:

- **Faith-Focused**
- **Mission-Minded**
- **Community-Connected**

Announcements

The offering for February 1 will be for MCC. Offerings can be sent to the church at P.O. Box 291, 429 E. First Street, Newton, KS 67114. There is also an offering plate in the Gathering Area that will be checked daily if you want to drop your gifts off at church. Please mark the designation of your offering. If left unmarked, it will go to Local Mission. For electronic giving, contact the church office or go to the church web-site: firstmennonitenewton.org.

Nursery care is available for infants and toddlers every Sunday during Sunday school and worship.

Childcare is available for children ages 2-5 during the worship service. Children of this age will have the opportunity to leave after the "Children's Time" for supervised play time in the Beginner's classroom, Room 234. Parents, please pick your children up promptly following the conclusion of the worship service.

FMC worship attendance for January 18—127; Sunday school—115.

Volunteers Needed for Nursery and Childcare During Worship! Join our wonderful team of caregivers who support the youngest members of our congregation on Sunday mornings. Most volunteers serve just once a month, and scheduling is flexible. Safe Sanctuaries training is required. For more information, contact

New Hope Shelter week—Our next week to serve at the Homeless Shelter is January 28-February 2. If you are able to help by volunteering or with meals, contact

Our new Trex bench has arrived! Congratulations and thanks to all of you for faithfully putting your recyclable soft plastics into the collection bins. We turned in 1000 lb. to Trex for recycling, which earned us this second bench. We'll let you know when we get it assembled, and you can try it out! Please keep dropping off your plastic as we start working toward a third bench. **Also, thank you to Janet Regier, Cindy Unruh, and others that have helped with this project!**

Please check the lost & found tub in the Gathering Area and all the coat racks for items that may be yours. There have been several things left here at the church recently. (coats, bags, walking cane, etc.)

Updates from the Sharp family and Eli Regier are posted on the Gathering Area bulletin board.

Save the date—the next Men's Breakfast will be Saturday, February 21.

For Your Prayers

Community Announcements

Kansas Mennonite Men's Chorus starts TODAY! All men are welcome at Hesston Mennonite Church at 2:30pm today, January 25, for the first of six rehearsals. The rehearsals last for 2 hours. KMMC has been singing since 1969 in Kansas, Oklahoma, Colorado, Nebraska & even Europe! If interested in singing or more information please reach out to Membership Chair Aaron Stucky—stuckya2003@yahoo.com. You can also find us on Facebook at Kansas Mennonite Men's Chorus.

Special Speaker on Murdered and Missing Indigenous People (MMIP): The Kansas Repair Communities, a local advocacy group working with the Coalition to Dismantle the Doctrine of Discovery, will have its next meeting on **Monday, January 26, 5:30 PM, in the Bethel College Mennonite Church Fellowship Hall**. The group will be privileged to hear a presentation from Sharron Fisher about Missing and Murdered Indigenous People (MMIP) from her perspective and experience as an Indigenous woman. MMIP is the group's selected focus for advocacy. The meeting will also include updates on other work as well as refreshments. All are welcome to attend this meeting and/or join the work of the group. The Kansas Repair Communities has grown over the past year to include individuals from more than 12 congregations as well as others.

Starting January 20—"Reclaiming My Roots," works by Marco Hernandez Guillen, opens in the Regier Art Gallery in Luyken Fine Arts Center at Bethel College (reception February 12). Gallery hours are Monday-Friday 9:00 AM-4:00 PM & Sunday 2:00-4:00 PM.

Hesston College hosts Melva Kauffman Lecture Series—Hesston College will host the annual Melva Kauffman Lecture Series January 25 and 26, welcoming internationally

recognized peace studies scholar and Hesston College alumna Dr. Angela Lederach '04 for a three-part series titled "Slow Peace: Lessons from Grassroots Peacebuilders in Colombia." Dr. Lederach will speak on January 25 at 7:00 PM and on January 26 at 11:00 AM and 7:00 PM. All events are free and open to the public and will be held at Hesston Mennonite Church. For more information visit hesston.edu/melva.

Mennonite Women USA is hosting a virtual Coffee & Conversation on Thursday, January 29, 5:00 PM. Diana Schunn (member of Grace Hill Mennonite Church, a WDC congregation) will share her remarkable story of receiving a heart transplant and continuing her life's work protecting abused children. Diana's journey of uncontrollable grace and gratitude-in-action will spark our conversation about organ donation, child protection, and making the most of second chances to pass forward as much love as we can. You can register at [Coffee and Conversation: A New Heart for a Life of Service | Mennonite Women USA](https://www.mennonitewomenusa.org/coffee-and-conversation-a-new-heart-for-a-life-of-service)

WANTED—Cars, Trucks, Motorcycles, RV's, Campers, Tractors, Modern Farm Equipment, etc. for the KS MCC Sale. Items you no longer need help Feed and Clothe Thousands in desperate living conditions. ALL donations are Tax Deductible. Call Jerry Toews for info: 620 367 8257. Help make a difference. Be a part of the growing number of folks donating vehicles to the Mennonite Relief Sale.

Love singing? Students in 2nd-5th grade are invited to join Newton Community Children's Choir's new **Prelude Choir!** For ten weeks starting February 9, we will meet on Mondays from 5:45-6:15 PM, at Bethel College's Fine Arts Center (choir room) to learn, sing, and have fun--no audition required! For further details and to sign up, visit nccchoir.org. Register by January 26 to guarantee your spot!

Share the love this Valentine's with OVM & MCC, February 12, 6:00-8:00 PM. In the spirit of Saint Valentine, share love with men on the indigent list at Hutchinson Correctional Facility. Help us pack 350 MCC prisoner care kits, hear impact stories at 7:30 PM, design a note to go into each kit, enjoy snacks and give a monetary donation to help cover the cost of the kit items. All ages are welcome to join us at MCC, 121 E. 30th St., in North Newton. Find out more at mcc.org/prisoner-care. Or reach out to broci-amueller@mcc.org.

Lunch & Learn at MCC! Tuesday, February 17, 12:00-1:00 PM, join the Global Voices Speaking Tour to hear firsthand stories of the intersection of climate and peace. Speakers Dr. Arefur Rahaman with MCC Bangladesh and David Waiswa with MCC East Africa and Sahel Region will share how they are working toward peace and climate resiliency, especially around food security. **RSVP by February 10** at mcc.org/global-lunch or contact patsydirksen@mcc.org, 316.283.2720. Suggested \$10 donation per lunch.