



## WEEK AT A GLANCE

### **Sunday, November 4**—*Body and Soul: Created for Intimacy*

Daylight Savings Time Ends  
9:15 AM Sunday School  
10:30 AM Worship Service

### **Tuesday, November 6**

4:00 PM YG Turkey Dinner Prep—FH  
7:00 PM Church Board

### **Wednesday, November 7**—**Church Family Night**

5:30 PM Meal served by the Youth Group—Annual Turkey Dinner  
Menu: Smoked Turkey, Mashed Potatoes, Corn, Cranberry  
Salad, Rolls, and Pumpkin Dessert  
6:45 PM Children—ages 2 years to 6th grade—Gather in Room 123  
6:45 PM Adult Bible Study—Room 222-224  
2018 Theme—FMC's 12 Foundational Scriptures  
6:45 PM Choir (Sanctuary)  
6:45 PM Jr. High (Room 126)

### **Thursday, November 8**

7:00 PM Nurture Commission

### **Sunday, November 11**—*Body and Soul: Holy Desires*

9:15 AM Sunday School  
10:30 AM Worship Service  
12:00 PM Potluck/Congregational Meeting

### **Upcoming Worship Services**

November 18—Thanksgiving

### **FIRST MENNONITE CHURCH**

429 E. First Street PO Box 291 Newton, KS 67114-0291

**Phone:** 316-283-0273

**E-mail:** [office@firstmennonitenewton.org](mailto:office@firstmennonitenewton.org)

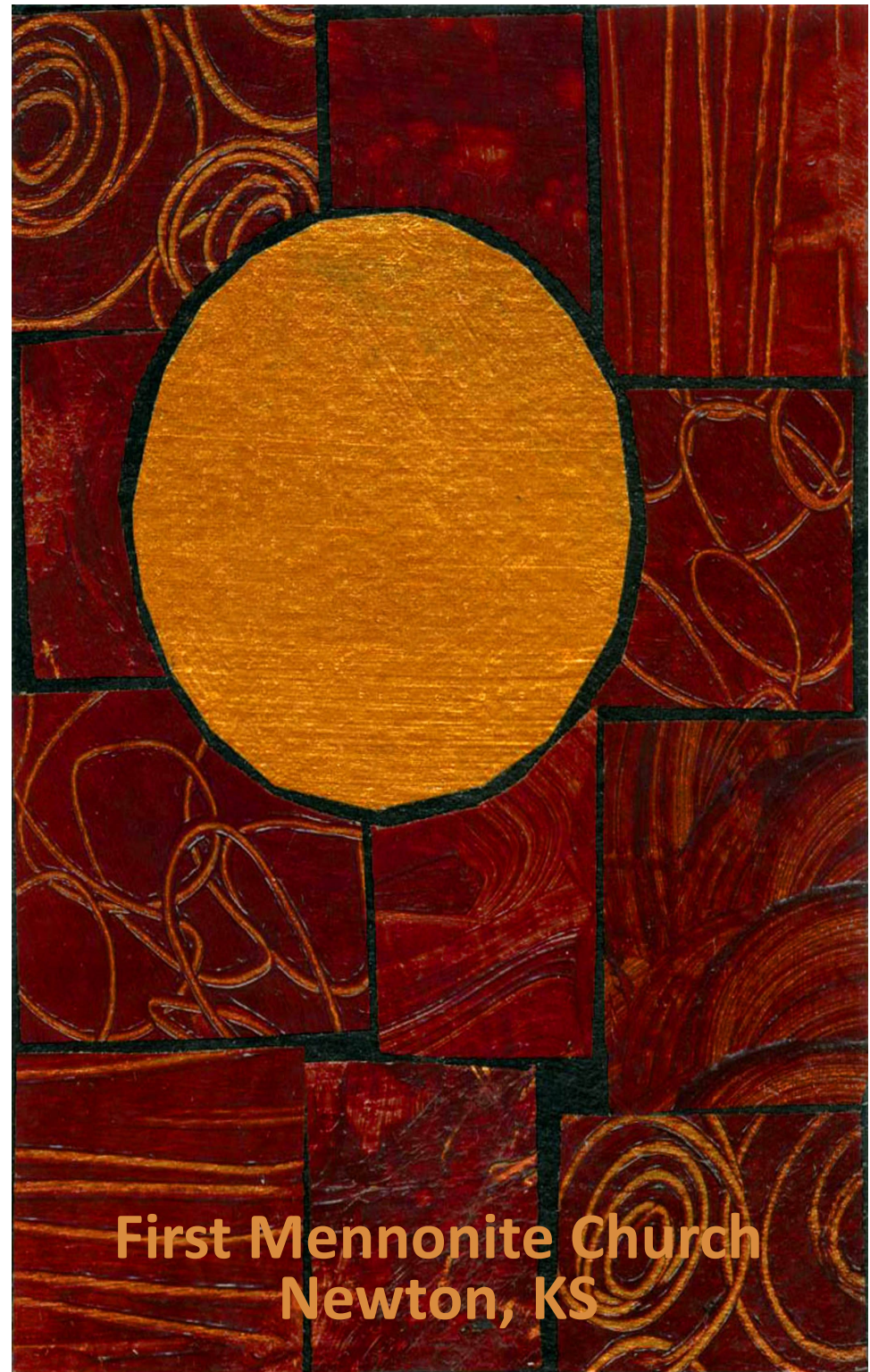
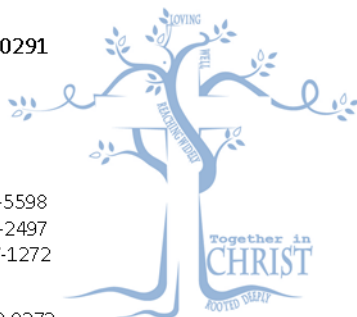
**Website:** [www.firstmennonitenewton.org](http://www.firstmennonitenewton.org)

#### **Pastoral Team**

Anita Kehr, Pastor.....316-283-5598  
Joel Schroeder, Pastor of Missional Ministries.....316-215-2497  
Kay Schroeder, Pastor of Worship and Visitation.....316-217-1272

#### **Administrative Assistant**

Tracy Kerr.....316-283-0273



**First Mennonite Church  
Newton, KS**

donation you may write a check to "Harvest of Love" and place it in the offering. Every donation is a gift that makes a difference in our neighbors' lives!

**We are very close to completing** the presentations of our church family in the church showcases. We would like to give a special thanks to all who participated in this three year project. If we have overlooked anyone, please contact the committee: Jerry and Delora Decker, John and Janice Good, or Dewayne and Betty Pauls.

**Casa Betania is selling tamales** as a fundraiser for their church. Chicken and pork tamales are available. Please send your orders to Pastor Jaime Cazares, jaimecazaresjr75@gmail.com, by next Thursday morning, November 8. They'll be ready for pick-up on Sunday, November 11, in the kitchen.

**CHRISTMAS EVE!** It is time to start putting together the children's Christmas Eve program! If you have a child who is kindergarten - 5th grade, they should have received a note last Wednesday night or in Sunday School. Please fill out the form and return to Cora Voran's mailbox. We need to know which children will be able to participate in the program on December 24.

**Remember to bring your donations** for the children to pack shoeboxes! Our packing party is coming up fast on November 14! Donations of hygiene items, school supplies, and toys are appreciated. Money donations are also great; just label it for shoeboxes and drop it in the offering plate or the shoebox labeled "donations" in the Court Area. (Remember no liquids, breakable glass items, food or toothpaste.)

**As furniture begins to arrive** for the newly renovated foyer there are opportunities for two new areas of ministry: **Coffee cart**—would you be willing to provide this service of welcoming and fellowship for Sunday mornings? **Wall hung TV monitors**—would you be willing to create scrolling displays for Sunday mornings? If either of these areas interest you and you are willing to commit your time to our congregation please contact a member of Property Committee so we can select and purchase the equipment needed.

**A support group for survivors** of sexual abuse will meet on Tuesday, November 6. If you are a survivor of sexual abuse and would like to attend please contact June Thomsen, member of Caregiving Commission, at 316-239-8747 for more information.

**Congregational Carry-in Dinner**—There will be a carry-in dinner following the worship service on Sunday, November 11, prior to the Fall Congregational Meeting. Please bring food to share with others and tableware. Drinks will be provided. Please join us in this fellowship time.

**The Fall Congregational Business meeting is called for Sunday, November 11.** The meeting will follow a carry-in potluck dinner and will begin at approximately 12:30 PM. Reports from Pastors, Church Board, Treasurer, Financial Stewardship Committee and Capital Fund Committee will be given. Action items will include voting for the ballot of those nominated for vacancies for lay leadership opportunities and approval of the 2019 budget. We encourage everyone to attend. This is your opportunity to participate in church-wide decisions.

**MCC Meat Canning**—Newton Area MCC meat canning is November 14-17. Please put these dates on your calendar.

**The Mennonite**—It is time for us to renew our subscriptions for *The Mennonite*. If you would like to renew your subscription the group rate is \$37. **Subscriptions are due November 18.** Please return the form that was in your church mailbox to the office and make checks payable to First Mennonite Church with *The Mennonite* on the memo line.

**Save the date:** "Conversation along the Way—Sharing our Stories from the Journey of These Years" is a congregational gathering being planned for Wednesday, November 28, 7:00-9:00 p.m. More information is on the green sheet in your mailboxes.

### Community Announcements

**"Bethel Sings," featuring the Women's Chorus, Men's Ensemble, Woven, Open Road, the Concert Choir, and special numbers, will be today, 4:00 PM, at Bethel College Mennonite Church.**

**Everence will hold an informative workshop** on Monday, November 5, 6:30 PM. *Social Security and retirement income planning* will cover when to begin taking Social Security, risks that can impact your savings, and strategies to help your income last throughout retirement. The workshops are presented by Everence staff and held at the Everence office at 3179 N. Main St., North Newton. Reserve your spot soon by contacting Michelle Ramer at (316) 283-3800; (877) 467-7294 or michelle.ramer@everence.com.

**Kidron Bethel Parkinson's Support Group** will meet Tuesday, November 6, at 2:00 PM. **Nick Sharp**, physical therapist and from our congregation, will discuss strategies and resources that individuals with Parkinson's Disease can utilize to optimize their lifestyle for the foreseeable future.

**We want you on our Summer Staff!** Camp Mennoscah will soon be recruiting at Mennonite colleges for staff for the 2019 summer. We'll be at the Kansas colleges on November 12-15 (Hesston, Tabor, Bethel, and McPherson). A pizza meal for Kansas area folks interested in being summer staff will be in Newton on November 14 (details soon). The summer staff application will be available online at [campmennoscah.org](http://campmennoscah.org) on November 7.

**St. Mary's Altar Society, St. Mary's Church**, will be sponsoring their annual Festive Fall Fair on Sunday, November 11. The event is 9:00 AM-2:00 PM with dinner being served from 11:00 AM-1:00 PM.

**International Mission Workers** Wayne and Jeannie Larson will be in Newton to share about their work. You are invited to join MC USA staff in the Newton offices (718 N Main St, Newton KS) to hear from them on Wednesday November 14, 2:00-3:00 PM. We will have coffee and hear a presentation from Wayne about work in the Middle East and other parts of the world.

**Attention Couples!** Mennonite Central Committee wants YOU to join the canning crew this year! This opportunity is a fully-supported short-term volunteer position that will travel in the United States and Canada between January and May 2019. For more information and/or to apply for the Canner Operator position, visit [mcc.org/serve](http://mcc.org/serve) or contact Heidi Huber by email at [heidihuber@mcc.org](mailto:heidihuber@mcc.org) or by phone at 316-283-2720.

**We can fill your empty hours!** Camp Mennoscah would be happy to share projects with you, if the recent rain is keeping you from work you would otherwise be doing. Give us a call at 620-297-3290 or email [olivia.bartel@campmennoscah.org](mailto:olivia.bartel@campmennoscah.org)! No hour will be lost and no project forgotten!

**Christmas Gathering for** all Camp Mennoscah volunteers! Put it on your calendar, wonderful counselors and program directors and cooks and nurses and staffers! We're gathering on December 15, 2:30 PM for conversation, cookies, games and great fun. Families invited to join.

**WELCOME TO EVERYONE** who has come to worship and especially to those who are here for the first time. May you experience the loving embrace of God today. Nursery Care, infants to age 2, is provided during the worship service in the nursery located at the back of the Sanctuary. Childcare is available for children ages 2-4 during the second half of the worship service in Room 223. If you need help finding your way, ask an usher at the door. We would be glad to help you!

**"Meet the Congregation"** displays now feature John Schmidt (Court Area display case); Nick and Laura Sharp and family (Library display case); Ryan and Miriam Goertzen-Regier (Court Area display case). Take a look at these display cases and learn more!

### **First Mennonite Church by the numbers**

#### **Attendance:**

•Worship—207 Visitors—9 Sunday School—164

**Offering:** Last week's offering for Local Missions was \$5,767. The offering for November 11 is for Local Missions.

**Thank you all for the cards**, gift cards and recipes. We appreciate it all so much and are sorry we could not be there to thank you all in person.

~Kaven and Crystal Denno

**Turkey Youth Group Dinner**—this Wednesday, November 7, 5:30-7:00 PM.

Invite your family, friends, neighbors, and co-workers to join the fun and fellowship! If you are homebound and would like to have a meal delivered to your home, call the church office and put in your request to Tracy, our church office administrator, by Wednesday, 3:30 PM. The youth will be happy to deliver it around 5:00 PM on November 7.

**Erma Raber's family is planning a come-and-go reception** for people to visit D.A. and family on Saturday, November 10, 1:30-3:30 PM in our Fellowship Hall. Erma died on Friday, October 26. All are welcome to attend.

**Harvest of Love**—Throughout November and December, the Salvation Army invites you to join in our annual food and fund drive to support people in need in our county. Items always needed are canned tuna, macaroni and cheese, spaghetti sauce, hamburger helper, tuna helper, cereal (of any kind), peanut butter, jelly, canned vegetables, and soups. A box is available in the Court Area, starting **today**, to collect nonperishable items. If you wish to make a monetary